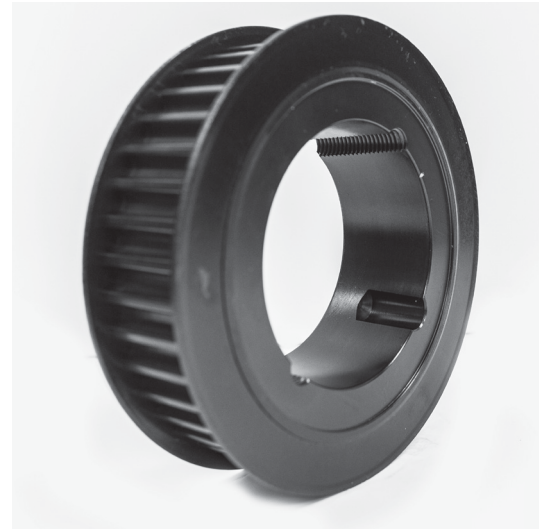


POWERHOUSE MX™

TIMING PULLEYS

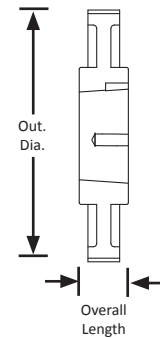
(Compatible with Poly Chain® GT® Carbon belts)

14 mm Pitch
For 37 mm Wide Belts
Iron
Black Oxide Plating
Taper-Lock® Style

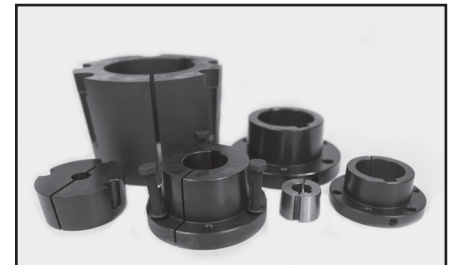
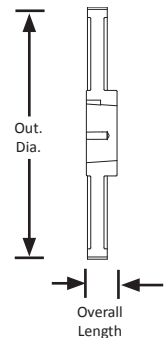


Part Number	No. of Teeth	Type	Pitch Dia. (in)	Out. Dia. (in)	Bushing	Face Width (in)	Overall Length (in)
90-14MX37-3525	90	C2	15.790	15.680	3525	2.063	2.500
112-14MX37-3525	112	C3	19.650	19.540	3525	2.063	2.500
126-14MX37-3525	126	C3	22.106	21.996	3525	2.063	2.500
140-14MX37-3525	140	C3	24.562	24.452	3525	2.063	2.500
154-14MX37-4030	154	C3	27.019	26.909	4030	2.063	2.500
168-14MX37-4030	168	C3	29.475	29.365	4030	2.063	3.000
180-14MX37-4030	180	C3	31.580	31.470	4030	2.063	3.000
200-14MX37-4030	200	C3	35.089	34.979	4030	2.063	3.000
224-14MX37-4030	224	C3	39.300	39.190	4030	2.063	3.000

TYPE C2



TYPE C3



For matching Taper-Lock® bushings, see page 373.

B&B Manufacturing, Inc. is pleased to announce the certification of our Quality Management System to the ISO 9001:2008 standard. The certification of compliance with the ISO 9001:2008 standard recognizes that the policies, practices and procedures of B&B Manufacturing provide consistent quality in the products that we provide to our customers. B&B Manufacturing engaged in a demanding and detailed evaluation process of our entire quality management system with SAI Global. This evaluation reviewed system development, documentation, internal audits, clearance of non-conformances and every quality management procedure in the company. This proactive decision to become ISO 9001:2008 certified demonstrates our commitment to providing our customers with high quality precision mechanical components and power transmission products. It is another step in its commitment to continual improvement and customer service.



SAI GLOBAL
 ISO 9001
 Quality